

Silica Compliance Flow Chart

This flow chart is designed to assist with determining compliance with VOSHA's respirable crystalline silica standard in construction (29 CFR 1926.1153).

ACTION LEVEL (AL):

25 µg/m³, 8-hr time-weighted average (TWA)

PERMISSIBLE EXPOSURE LIMIT (PEL)

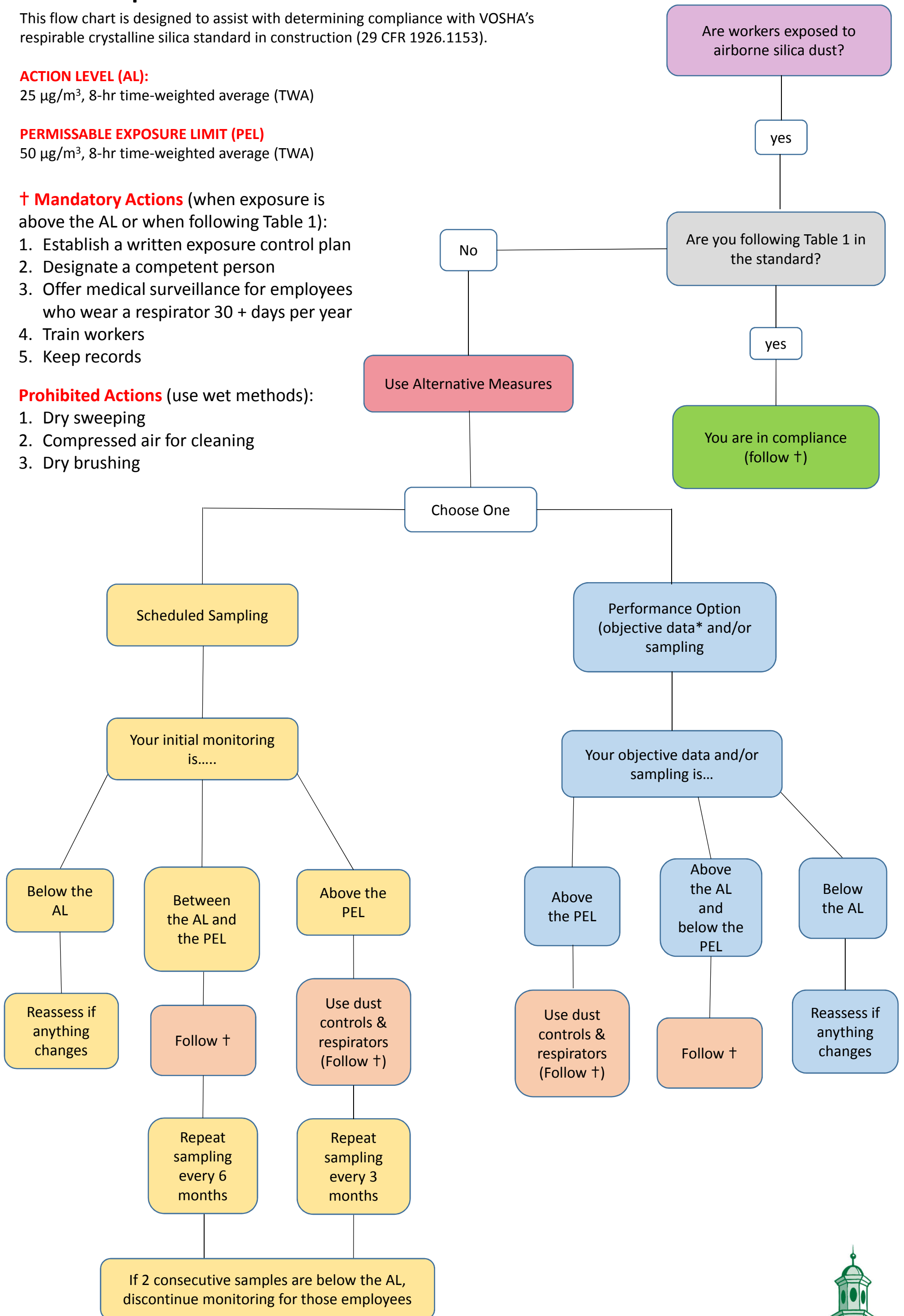
50 µg/m³, 8-hr time-weighted average (TWA)

† **Mandatory Actions** (when exposure is above the AL or when following Table 1):

1. Establish a written exposure control plan
2. Designate a competent person
3. Offer medical surveillance for employees who wear a respirator 30 + days per year
4. Train workers
5. Keep records

Prohibited Actions (use wet methods):

1. Dry sweeping
2. Compressed air for cleaning
3. Dry brushing



*Objective Data: Information from industry-wide surveys demonstrating employee exposure to respirable crystalline silica associated with a specific process, task or activity. The data must reflect workplace conditions resembling work practices and environmental conditions in the employer's current operations.

