

Debris Removal Guidelines for Private Residential Properties

In efforts to expedite the debris removal process, please follow these rules.

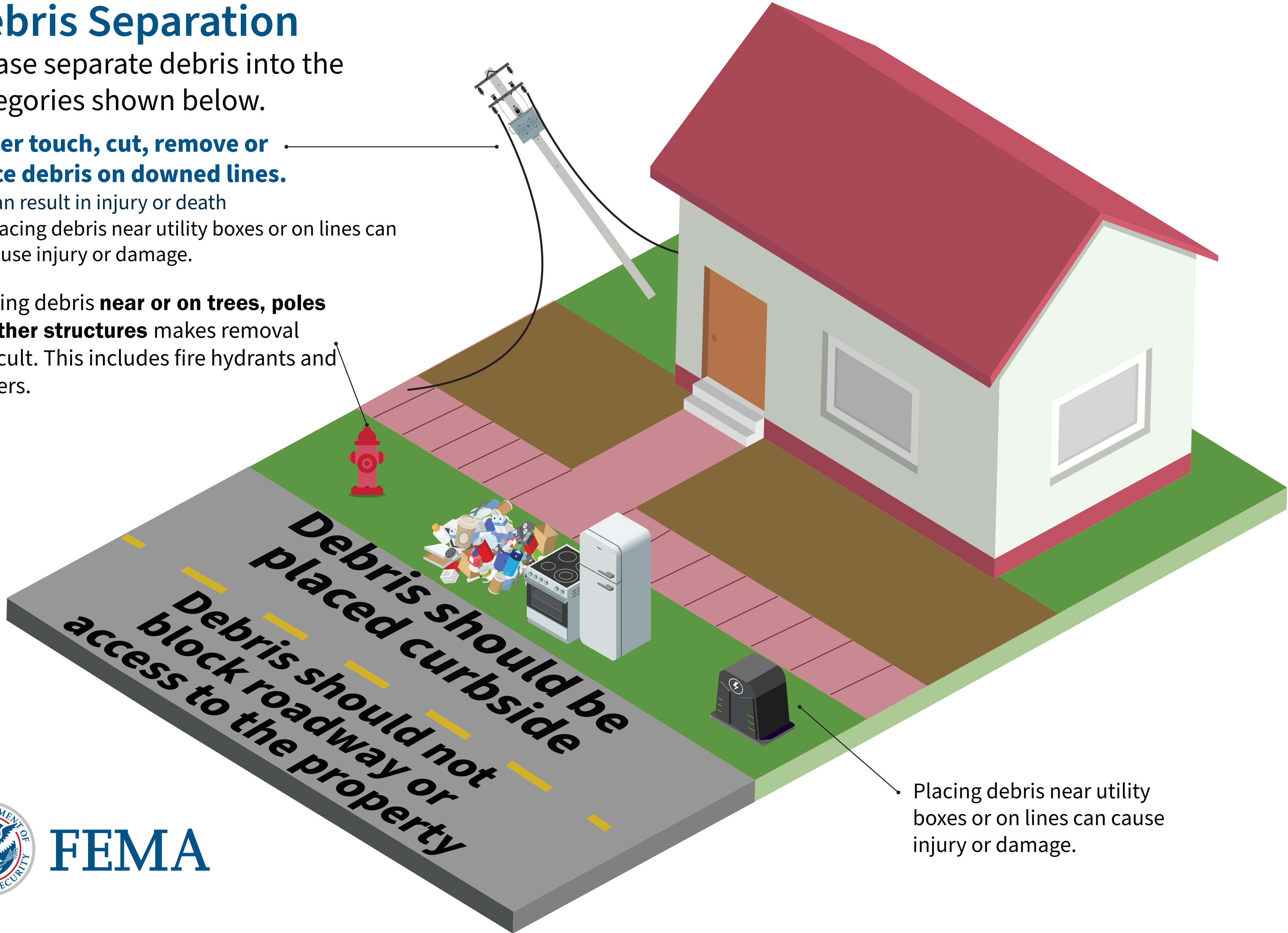
Debris Separation

Please separate debris into the categories shown below.

Never touch, cut, remove or place debris on downed lines.

- Can result in injury or death
- Placing debris near utility boxes or on lines can cause injury or damage.

Placing debris **near or on trees, poles or other structures** makes removal difficult. This includes fire hydrants and meters.



Check with your local office of emergency management for more information on debris removal.



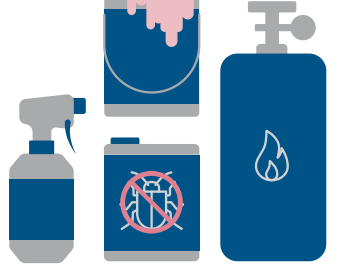
Large Appliances
Refrigerator, washer/dryer, air conditioner, stove, water heater, dishwasher. Do not leave doors unsealed or unsecured.



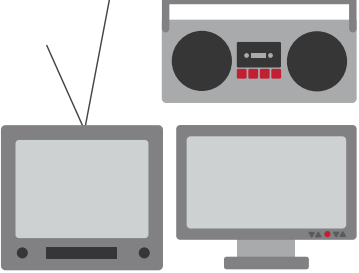
Construction Debris
Building materials, drywall, lumber, carpet, furniture, plumbing.



Vegetative Debris
Tree branches, leaves, logs, plants.



Hazardous Waste
Oil, battery, pesticide, paint, cleaning supplies,



Electronics
Television, computer, stereo, phone, DVD player.

Placing debris near utility boxes or on lines can cause injury or damage.

